



MINI DISINFECTION AIR PURIFIER



Characteristic :

1. Install UVC LED deep UV light for quick sterilization, sterilization rate reaches 99.9%.
2. With HEPA 13 medical grade filter, isolated PM1.0, PM2.5 air particles and various types of bacteria and virus.
3. Activated carbon removes odor quickly.
4. Lightweight, easy to carry, 3-stage air volume control, low noise design.

Specifications

1、Model	ML-BS110	7、Life time	25°C, 20000 hours
2、Rated Voltage	5Vdc (USB)	8、Work Temp.	-10°C ~ +60°C
3、Power consumption	1.5 W	9、UVC Wavelength	270 nm ~ 280 nm
4、Air Volume	18.5 CFM	10、HEPA Filter	Grade13 with Active Carbon
5、Noise Level	35 db (1m from Fan)	11、CADR	6.75 m ³ / hour
6、Cleaning Energy Efficiency	$\eta=6.75 \text{ m}^3 / (\text{W}\cdot\text{h})$	12、Dimension	∅ 9cm x H 17 cm

USER MANUAL



Maintain :

Before clean and other maintenance, the air purifier must be dis-connecting the power supply.

To ensure the effect of purification, please wrap dust gently from the air intake-hole with soft cloth regularity.

Note :

1. Ensure the air purifier is stable so as to avoid excessive vibration or falling.
2. The power supply voltage of this machine is DC 5V, please be sure to use the power input matched with this machine.
3. The air purifier should be over 20 cm from the wall and other shielding objects.
4. If the products is sound or smell abnormally, or high temperature, please stop using it immediately.
5. Do not put finger and other objects into the protective net, and the air intake or outlet.
6. Keep hair or fabric away from the machine, so as not to get involved or block the intake or outlet.
7. Avoid using in high temperature, humidity and water area.
8. **WARNING:** UV emitted from this product. Avoid eye and skin exposure to unshielded products.

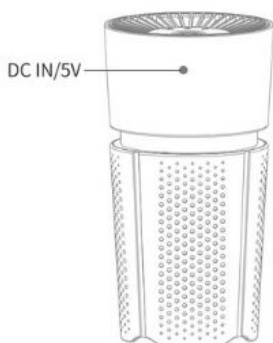
INTRODUCTION



INDICATOR
POWER & MODE SWITCH



FRONT



DC IN/5V

BACK


USE





POWER & MODE SWITCH

Click and the level will be in turn as follow:
POWER ON → SLEEP MODE → COMFORT
MODE → INJECTION MODE → POWER OFF

RUNNING MODE

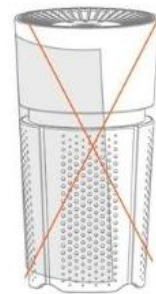
 **SLEEP MODE:**
Ultra low noise operation, create a quiet sleep environment.

 **COMFORT MODE:**
Run at a moderate speed.

 **INJECTION MODE:**
Run at the maximum speed.

NOTE

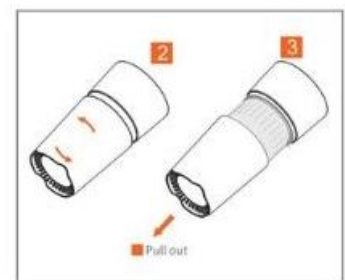
In order to better performance of air filtered will use, please don not use close or paper wrap the product.



FILTER REPLACEMENT

The replacement period of the filter core is 1-3 months. Replaced method as follow :

1 Rotate the base anticlockwise



Applications :

Office 、 Vehicle 、 Baby room 、 Room
and Public transport. Etc...



Air Supercharging System/Higher Efficiency

High-performance purification results are derived from the continuous circulation of air.

